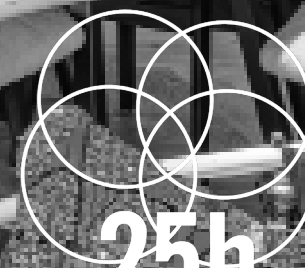


meetings & events



25h

paris/terminus nord

twenty five hours hotel

content

6	meeting spaces	22	rooms
13	packages	23	event ideas
14	room rental	27	directions
15	extras	28	contact
18	restaurant & bar		

say hello to gustave.

overview

- 235 rooms
- 5 multifunctional rooms for small events and meeting for up to 50 people – event venue for 100 participants
- free high-speed WiFi throughout the hotel

public areas

- NENI Paris
- Sape Bar
- 25hours things shop
- vintage coffee truck



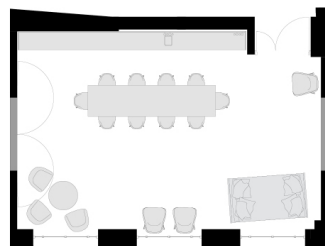


**time for
another
adventure.**

meeting spaces

saint martin

7



overview

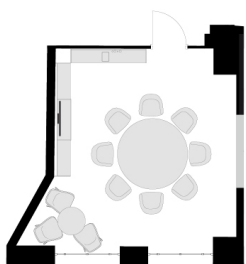
The Saint Martin room at the 25hours Hotel Terminus Nord in Paris' lively 10th arrondissement can be used as a private dining room as well as for all kinds of meetings & events for up to 10 people (up to 25 people for a reception). Equipped with free WiFi, USB and plug sockets at the table, a flat screen monitor, facilitator's equipment, this 45 sqm room is perfect for meetings and events in daylight. A bed and other lounge furniture create a casual atmosphere for creative and informal meetings.

facts

size	room capacity [max. capacity]	equipment
— 45 sqm	— board room [15 people] — island table [25 people] — theatre [50 people] — standing reception [60 people]	— large rectangular table and chairs — corner sofa and coffee table — bed
room rental	full day eur 800 half day eur 500	meeting package full day: from 9 people meeting package half day: from 6 people

* for bookings with meeting package, the price varies depending on the number of participants

magenta



overview

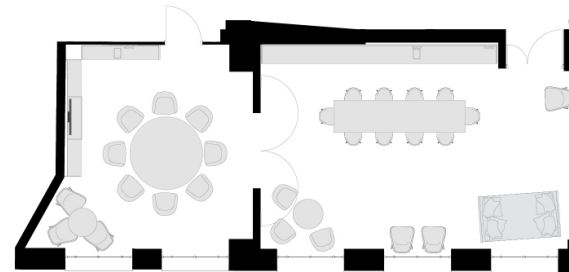
The Magenta room at the 25hours Hotel Terminus Nord in Paris' lively 10th arrondissement can be used as a private dining room as well as for all kinds of meetings & events for up to 8 people. Equipped with free WiFi, USB and plug sockets at the informal coffee table style seating area, a flat screen monitor, facilitator's equipment and blackout curtains, this 26 sqm room is perfect for meetings and smaller events.

facts

size	room capacity [max. capacity]	equipment
_ 26 sqm	_ board room [8 people]	_ large round coffee table style and comfortable chairs
room rental	full day eur 550 half day eur 350	meeting package full day: from 6 people meeting package half day: from 4 people

* for bookings with meeting package, the price varies depending on the number of participants

saint martin & magenta⁹

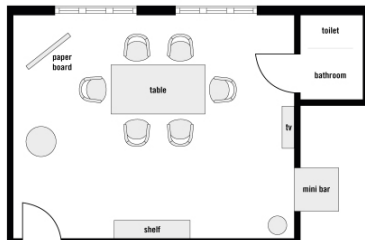


facts

size	room capacity [max. capacity]	equipment
– 71sqm	– island table [36 people] – theatre [50 people] – standing reception [80 people]	– large rectangular table and chairs – corner sofa and coffee table – bed – large round table and comfortable chairs
room rental	full day eur 1350 half day 850	

* for bookings with meeting package, the price varies depending on the number of participants

speakeasy



overview

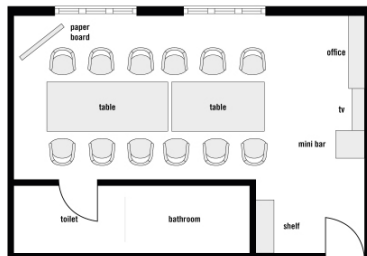
The Speakeasy is tucked away on the first floor of the 25hours Hotel Terminus Nord. The 20 sqm room can be used for smaller meetings and events in a casual atmosphere. Equipped with free WiFi, a flat screen monitor, a UE Megaboom Bluetooth loudspeaker, a bar and its own bathroom (if desired), this room can be used by up to 6 people. The colourful design and relaxed atmosphere of the rooms provide lots of space for creativity and stimulate direct discussions in an inner circle atmosphere.

facts

size	room capacity [max. capacity]	equipment
_ 20 sqm	_ board room [6 people]	_ large table and comfortable chair _ TV _ bathroom
room rental	full day eur 380 half day eur 250	meeting package full day: from 4 people meeting package half day: from 3 people

* for bookings with meeting package, the price varies depending on the number of participants

dunkerque



overview

The Brainstorming room used to be one of the hotel's rooms. Today, it welcomes you for meetings, discussions, interviews or, as the name suggests, brainstorming. Equipped with two large tables, comfortable armchairs, a TV and a flipchart, this 25m² space can accommodate up to 12 people seated. Private toilets are also available.

facts

size	room capacity [max. capacity]	equipment
— 25 sqm	— board room [12 people]	— 2 rectangular tables — comfortable armchairs — television
room rental	full day eur 680 half day eur 420	meeting package full day: from 7 people meeting package half day: from 5 people

* for bookings with meeting package, the price varies depending on the number of participants

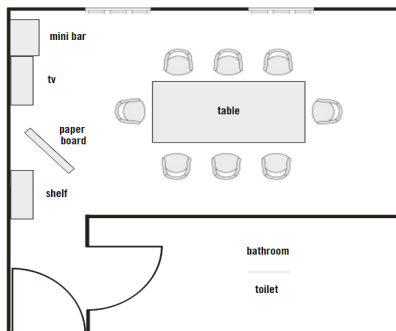
lafayette



overview

The Lafayette room used to be one of the hotel's rooms. Today, it welcomes you for meetings, discussions, interviews or, as the name suggests, brainstorming. Equipped with a large table, comfortable armchairs, a TV and a flipchart, this 22m² space can accommodate up to 8 people seated. Private toilets are also available.

facts



size	room capacity [max. capacity]	equipment
_ 25 sqm	_ board room [8 people]	_ 1 large rectangular table _ comfortable armchairs _ television
room rental	full day eur 550 half day eur 350	meeting package full day: from 6 people meeting package half day: from 4 people

* for bookings with meeting package, the price varies depending on the number of participants

meeting packages

full day meeting package

- _ a colorful and stylish meeting room with a daylight and a view on the historic Gare du Nord
 - _ high-speed WiFi and equipment for all participants
 - _ break in the meeting room (am and pm)
 - _ TV screen with click and share system
 - _ paperboard
 - _ 25hours tool box
 - _ visio kit on request
 - _ HDMI Cable
-

eur 99 per person
8 hours maximum

half day meeting package

- _ a colorful and stylish meeting room with a daylight and a view on the historic Gare du Nord
 - _ high-speed WiFi and equipment for all participants
 - _ break in the meeting room (am or pm)
 - _ TV screen with click and share system
 - _ paperboard
 - _ 25hours tool box
 - _ visio kit on request
 - _ HDMI Cable
-

eur 89 per person
4 hours maximum

only room rental

saint martin

- half day:
8 – 12h or 14 – 18h
eur 500
- full day:
9 – 17h
eur 800
- extra hour:
eur 70 per hour

magenta

- half day:
8 – 12h or 14 – 18h
eur 350
- full day:
9 – 17h
eur 550
- extra hour:
eur 70 per hour

speakeasy

- half day:
8 – 12h or 14 – 18h
eur 250
- full day:
9 – 17h
eur 380
- extra hour:
eur 70 per hour

dunkerque

- half day:
8 – 12h or 14 – 18h
eur 420
- full day:
9 – 17h
eur 680
- extra hour:
eur 70 per hour

lafayette

- half day:
8 – 12h or 14 – 18h
eur 350
- full day:
9 – 17h
eur 550
- extra hour:
eur 70 per hour

extras

equipment (already included in the meeting package)

high-speed WiFi for all participants	free
HD flatscreen size tv with a lickshare wireless connection to mirror your laptop screen	eur 40 per unit and per day
paperboard	eur 30 per unit and per day
the 25hours tool box full of stationery and office supplies and some cheeky messages	eur 20 per unit and per day
wired microphone (not included in the meeting package)	eur 50 per unit and per day

breaks

with meeting package:
drinks and snacks available within arm's reach throughout your meeting: coffee, tea, water, freshly squeezed juices, fresh fruit, mouthwatering muffins and pastries.

unlimited sparkling and still filtered water eur 3 per person

unlimited sparkling and still filtered water eur 9 per person
tea and coffee with nespresso machine

snacks and drink can be ordered à la carte

dining packages

Our mediterranean cuisine restaurant, NENI Paris, and our cocktail bar, the Sape Bar, are located on the first floor of the hotel. Each has its own character and welcomes groups of different sizes to enjoy a meal or a drink.

lunch

Chef's choice menu

Starter

Main course

Dessert

½ bottle of water

1 tea or coffee per person

Pita sandwich menu

A chicken or falafel pita bread

1 piece of fruit,

1/2 bottle of water per person

dinner

Balagan menu

A selection of different mezzes chosen by our Chef to discover the NENI cuisine.

Mineral water, tea / coffee included.

Chef's choice menu 2.0

Starter

Main course

Desert

½ bottle of water

1 tea or coffee per person

afterworks

We can welcome you in one of our private lounges or in our Sape Bar, which is ideal for after-work parties.

Contact us to discuss your needs and create a tailor-made proposal.



real place,
real people.

restaurant & bar

NENI restaurant

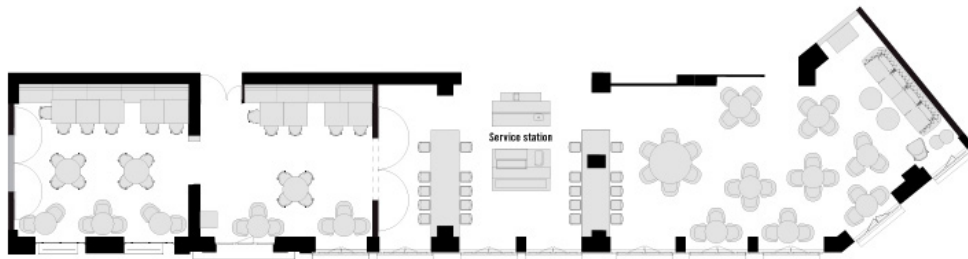


overview

The NENI Paris restaurant is located directly opposite the Gare du Nord train station in the heart of Paris. Inspired by Persian, Arabic, French, and Russian influences, the Molcho family's restaurant concept presents itself as a lively location where encounters and communication while sharing a meal and celebrating indulgent moments take center stage. Served in Balagan style (pleasant chaos), everybody can sample a little of everything, like when enjoying a meal at a friend's house.

facts

size	room capacity [max. capacity]	equipment
— 200 sqm	— standing reception 100 people	— in addition
room rental	price on request	



The NENI Restaurant is divided into 3 rooms. We propose the rental of 2 rooms in addition to Saint Martin and Magenta for events up to 100 people.

SAPE bar

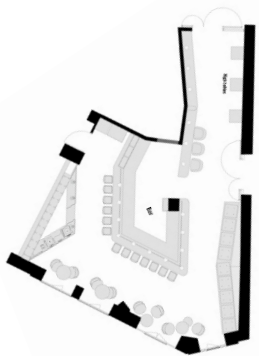


overview

Inspired by the flamboyant yet elegant clothing of the Sapeurs, whose extravagant outfits contrasted against their actual living conditions, the Sape Bar at Gare du Nord station is a meeting point for locals and tourists alike. The large bar made of bronze-coloured mosaic glass, dark wooden flooring and cosy leather armchairs create a gentleman's club atmosphere and make the Sape Bar the perfect venue for some quick after-work drinks, a relaxing aperitif, or long casual evenings with friends.

facts

size	room capacity [max. capacity]	equipment
_ 70 sqm	_ 40 people seated _ 80 people standing	_ in addition
room rental	price on request	



**don't act like
you're not
impressed.**

rooms

medium

medium / medium with view

- _ 17–21 sqm
- _ double bed (140, 160 or 2 x 90 cm)
- _ free high-speed WiFi
- _ air conditioning
- _ rain shower head
- _ Smart TV
- _ FREITAG or canvasco bag for use during your stay
- _ Schindelhauer bikes for rent
- _ free minibar



large

large / large with a view

- _ 22–29 sqm
- _ double bed (160, 180 or 2 x 90 cm)
- _ free high-speed WiFi
- _ air conditioning
- _ rain shower head
- _ Smart TV
- _ FREITAG or canvasco bag for use during your stay
- _ Schindelhauer bikes for rent
- _ free minibar



extra large

extra large / extra large with a view

- _ 30–33 sqm
- _ king-size bed (180 cm)
- _ free high-speed WiFi
- _ air conditioning
- _ Supersense retro record player
- _ rain shower head
- _ Nespresso coffee machine
- _ Smart TV
- _ FREITAG or canvasco bag for use during your stay
- _ Schindelhauer bikes for rent
- _ free minibar



need anything bigger? ²⁶

local partnerships

For any projects that we could not accommodate, we work with partners within walking distance who offer event spaces for larger events. Feel free to contact us for more information



directions

25hours hotel terminus nord



arriving by car

GPS coordinates: Latitude: 48.879574 | Longitude: 2.355134

Parking: 25hours Hotel Terminus Nord has a partnership with EFFIA Gare du Nord parking (please check with reception for rates and conditions). Visit <https://www.effia.com/parking/parking-paris-gare-du-nord-effia>

Gare du Nord car park address: 3 Rue de Compiègne, 75010 Paris

arriving on public transport

Station: Gare du Nord

Metro: line 2 (via “La Chapelle” station), line 4 and line 5 RER B,D and E

Train: SNCF, Eurostar, Thalys

From Roissy-Charles de Gaulle airport: Take RER B towards Paris, alight at “Gare du Nord” station and leave via exit 3 (“Rue de Dunkerque”). The hotel is situated 10 meters from the exit. Ticket price: EUR 10

From Paris-Orly airport: Take the Orly Val shuttle bus towards Antony, alight at “Antony” then take RER B towards Paris, alight at “Gare du Nord” station and leave via exit 3 (“Rue de Dunkerque”). The hotel is situated 10 meters from the exit. Ticket price: EUR 12.05

From Paris-Beauvais airport: Take the Paris Beauvais airport shuttle bus to “Paris Porte Maillot”. At “Porte Maillot”, take metro line 1 towards “Château de Vincennes” and alight at “Châtelet”. At “Châtelet”, take RER B (towards Mityr Claye or Charles de Gaulle airport), alight at “Gare du Nord” and leave via exit 3 (“Rue de Dunkerque”). The hotel is situated 10 meters from the exit. Ticket price: EUR 18.90

contact

25hours hotel terminus nord
12 boulevard de denain
75010 paris

p +33 1 42 80 82 19 m +33 6 23 88 53 63
events.terminusnord@25hours-hotels.com