

# meeting rooms



  
**25h**  
copenhagen / indre by  
twenty five hours hotel

  
**25h**  
copenhagen / paper island  
twenty five hours hotel

# content

- 3 overview**
- 5 indre by packages**
- 7 extras indre by**
- 8 indre by function rooms**
- 15 indre by rooms**
- 18 paper island packages**
- 20 extras paper island**
- 21 paper island function rooms**
- 29 paper island rooms**
- 32 event ideas**
- 34 directions**
- 36 contact**

# i can't adult today.

## overview

---

- 243 rooms
- Kreafunk bluetooth speakers
- free high-speed wi-fi throughout the hotel
- sauna
- function rooms
- free mini bar

## public areas

---

- 25hours things shop
- Vinyl lounge
- NENI restaurant
- Rendezvous Bar
- Café Duse
- Secret garden



# hygge house.

## overview

---

- 128 rooms
- Kreafunk bluetooth speakers
- free high-speed wi-fi throughout the hotel
- function rooms up for 150 guests
- free mini bar

## public areas

---

- 25hours things shop
- Tiger Lily restaurant
- Nomad Day Bar
- Victory Public House (8th floor penthouse bar)



i can't adult  
today.



copenhagen / indre by  
twenty five hours hotel

# conference packages

## basic package

always included

- pad & pencil, projector and screen or flat screen (depending on the conference room)
- 1 whiteboard/pin board (covered on both sides)
- 1 flipchart with paper and pens
- 1 moderator's toolkit
- free high-speed Wi-Fi
- personal support during the conference

---

additional conference equipment  
available on request

## half-day package

- room rental
- standard set-up and equipment
- water & coffee during the day
- morning coffee break  
or afternoon coffee break  
sweet or savoury snacks.
- best of neni balagan style  
chef's choice

---

725 DKK p.p.\*

## full-day package

- room rental
- standard set-up and equipment
- water & coffee during the day
- morning coffee break  
sweet or savoury snacks.
- afternoon coffee break  
sweet or savoury snacks.
- best of neni balagan style  
chef's choice

---

975 DKK p.p.\*

# room rental rates\*

## style

- \_ 74 m<sup>2</sup>
- \_ capacity of 36 people
- \_ set-up classroom style
- \_ incl. water and technic
- \_ set-up in islands

---

all day 6.000 DKK  
half day 4.000 DKK

## opinion

- \_ 60 m<sup>2</sup>
- \_ capacity of 16 people
- \_ set-up classroom style
- \_ incl. water and technic

---

all day 5.000 DKK  
half day 3.000 DKK

## f\*\*k everything

- \_ 52 m<sup>2</sup>
- \_ capacity of 16 people
- \_ set-up boardroom style
- \_ incl. water and technic

---

all day 7.000 DKK  
half day 5.000 DKK

## doubt

- \_ 32m<sup>2</sup>
- \_ capacity of 8 people
- \_ incl. water & technic
- \_ set-up boardroom style

---

all day 5.000 DKLK  
hourly rate 800 DKK

## archive

- \_ incl. water & tech
- \_ capacity of 8 people
- \_ set-up boardroom style

---

all day 5.000 DKLK  
hourly rate 800 DKK

\*without conference package

# extras

## extra coffee break:

- \_ baked good
- \_ fruit basket
- \_ coffee & tea

85 DKK p.p.

## extra treats

- \_ sweet or salty

35 DKK p.p.

## light breakfast

- \_ served in the meeting room
- \_ juice, coffee, tea, water, croissant, fruit, buns, jam and cheese and cold cuts

125 DKK p.p.

## that's hot

- \_ sauna gus

on request

## NENI breakfast

- \_ breakfast buffet
- \_ coffee and tea

245 DKK p.p.

## NENI lunch

- \_ chef's choice menu
- \_ incl. 1 soft drink per person

295 DKK p.p.

## NENI dinner

- \_ from 2 courses
- \_ excl. drinks

from 350 DKK p.p.

## private dining room

- \_ price for food & drinks will be deducted from the minimum spend
- \_ minimus of 10 guests
- \_ balagan menu

thursday-saturday  
15.000 DKK minimum spend  
sunday-wednesday  
10.000 DKK minimum spend

## equipment

equipment available upon request, pricing per item

white board or flip chart	150 DKK
handheld microphone	250 DKK
headset microphone	350 DKK
additional sound system with 2 speakers	450 DKK
c touch screen	500 DKK
further technical equipment	upon request from external company

# style

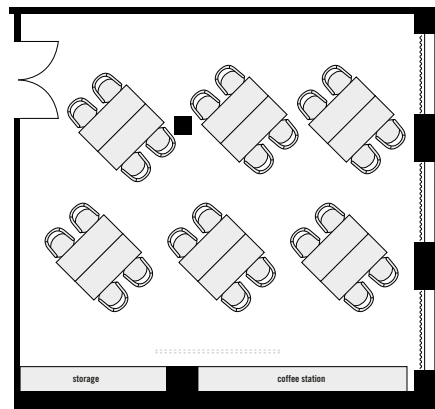
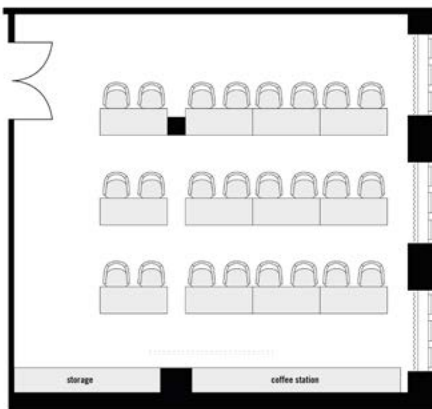


## overview

Inspired by the building's history, the Style meeting room is reminiscent of a classroom. The largest of the hotel's meeting rooms boasts plenty of natural light and its 74 sqm can accommodate up to 24 people with classroom-style seating. The colourful furnishings and conference technology – which is included as part of the package – offer the perfect setting for the most diverse meetings and events.

## facts

size	room capacity [max. capacity]	equipment	minimum number of attendees
– 74 m <sup>2</sup>	– classroom-style [24 people] – islands [36 people]	– set-up classroom style – incl. water and technic	– 15 people



room rental (equals minimum spend)

starting from  
all day 6.000 DKK  
half day 4.000 DKK



# opinion

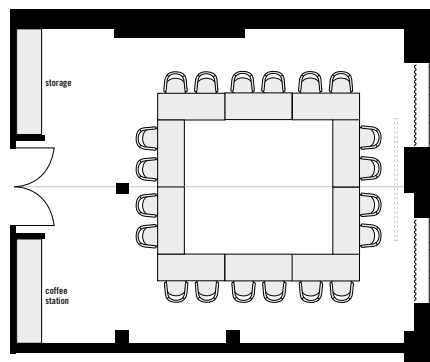
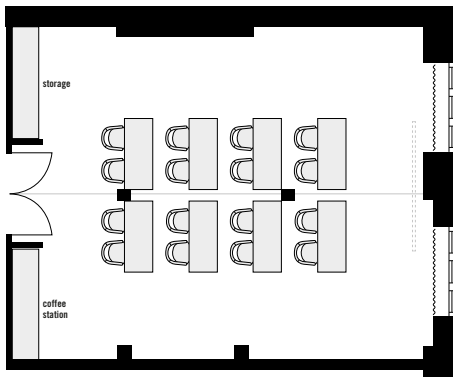


## overview

The Opinion meeting room challenges the decision-making ability of meeting participants. Divided exactly into two colours, the room is ideal for creative meetings, workshops or product presentations. The room also features large windows, modern conference technology and a flexible layout.

## facts

size	room capacity [max. capacity]	equipment	minimum number of attendees
– 60 m <sup>2</sup>	– classroom-style [16 people] – islands [24 people]	– set-up classroom style – incl. water and technic	– 6 people



room rental  
(equals minimum spend)

starting from  
all day 5.000 DKK  
half day 3.000 DKK

# f\*\*k everything



## overview

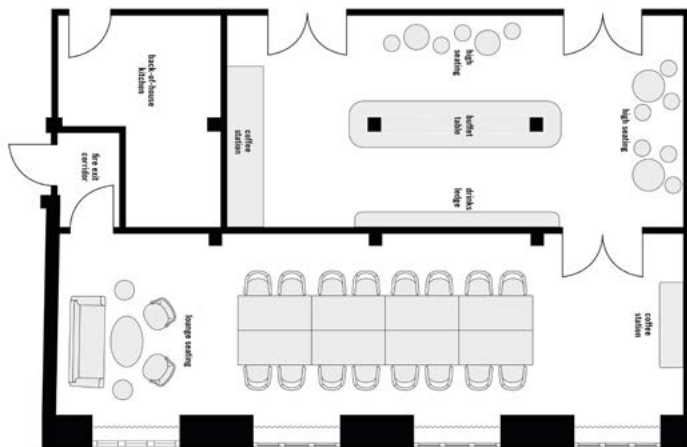
It isn't just the name that divides opinion; the furnishings are also not what you would expect from a regular conference room. The extravagant wallpaper, patterned carpet and colourful curtains create a cosy atmosphere, and the wooden table in the centre of the room promotes the creative exchange of ideas. A seating area with vintage furniture and access to our breakout area also provide the opportunity to gather in smaller groups.

## facts

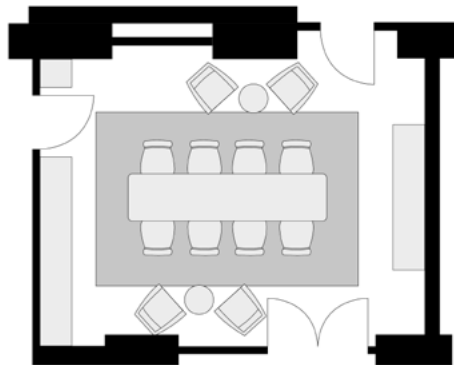
size	room capacity [max. capacity]	equipment	minimum number of attendees
_ 52 m <sup>2</sup>	_ boardroom [16 people]	_ set-up boardroom style _ incl. water and technic	_ 6 people

room rental (equals minimum spend)

starting from  
all day 7.000 DKK  
half day 5.000 DKK



# doubt



## overview

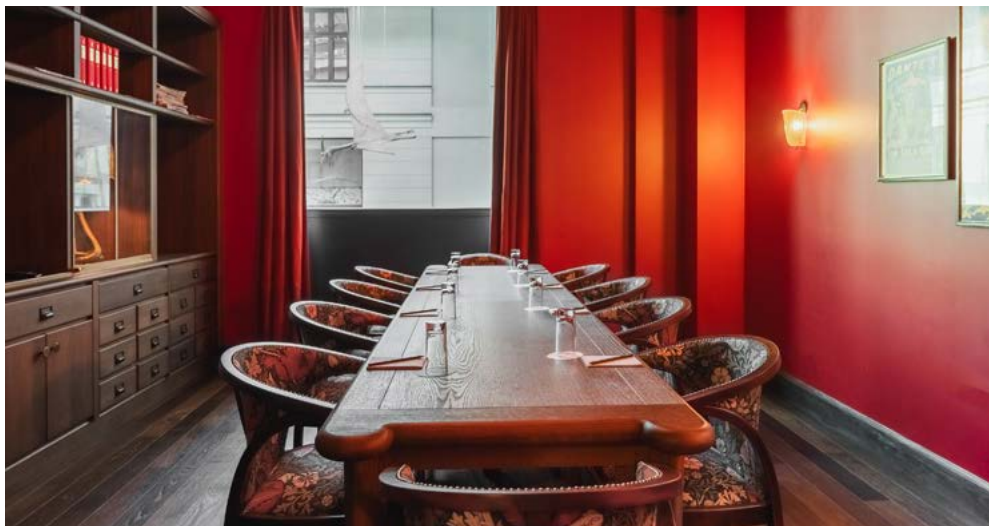
The Doubt room is located right next to reception and is ideal for smaller meetings. A conference table can accommodate 8 people, and the TV, which is included in the package, makes smaller presentations or screenings possible. In order to facilitate spontaneous short meetings, the room can also be hired on an hourly basis. Fresh water is always available; coffee and tea specialities can be provided upon request.

## facts

size	room capacity [max. capacity]	equipment	minimum number of attendees
_ 32 m <sup>2</sup>	_ boardroom style [8 people]	_ set-up boardroom style _ incl. water and technic	_ 4 people

room rental (equals minimum spend)      hourly rate 800 DKK  
full day 5000 DKK

# archive



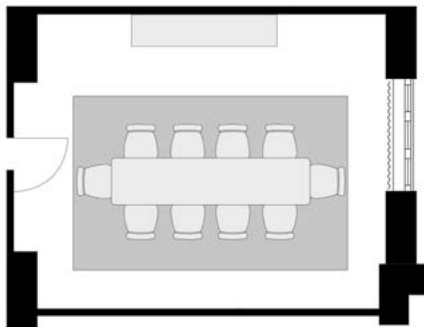
## overview

Located on the first floor, the school's old archive has a beautiful view over the Assembly Hall. The room is ideal for smaller meetings or as a breakout room. The boardroom setup accommodates up to 8 people, and the TV, which is included in the package, makes smaller presentations or screenings possible. The room is available on an hourly basis. Fresh water is always available, coffee, tea and other specialties can be provided upon request.

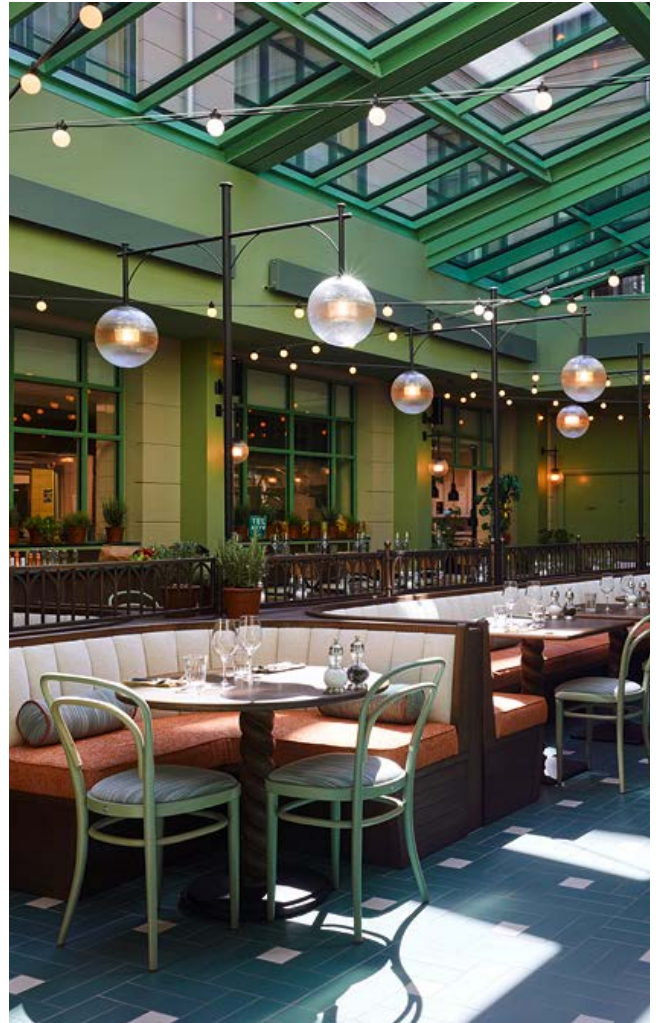
## facts

size	room capacity [max. capacity]	equipment	minimum number of attendees
_ 32 m <sup>2</sup>	_ boardroom style [10 people]	_ set-up boardroom style _ incl. water and technic	_ 4 people

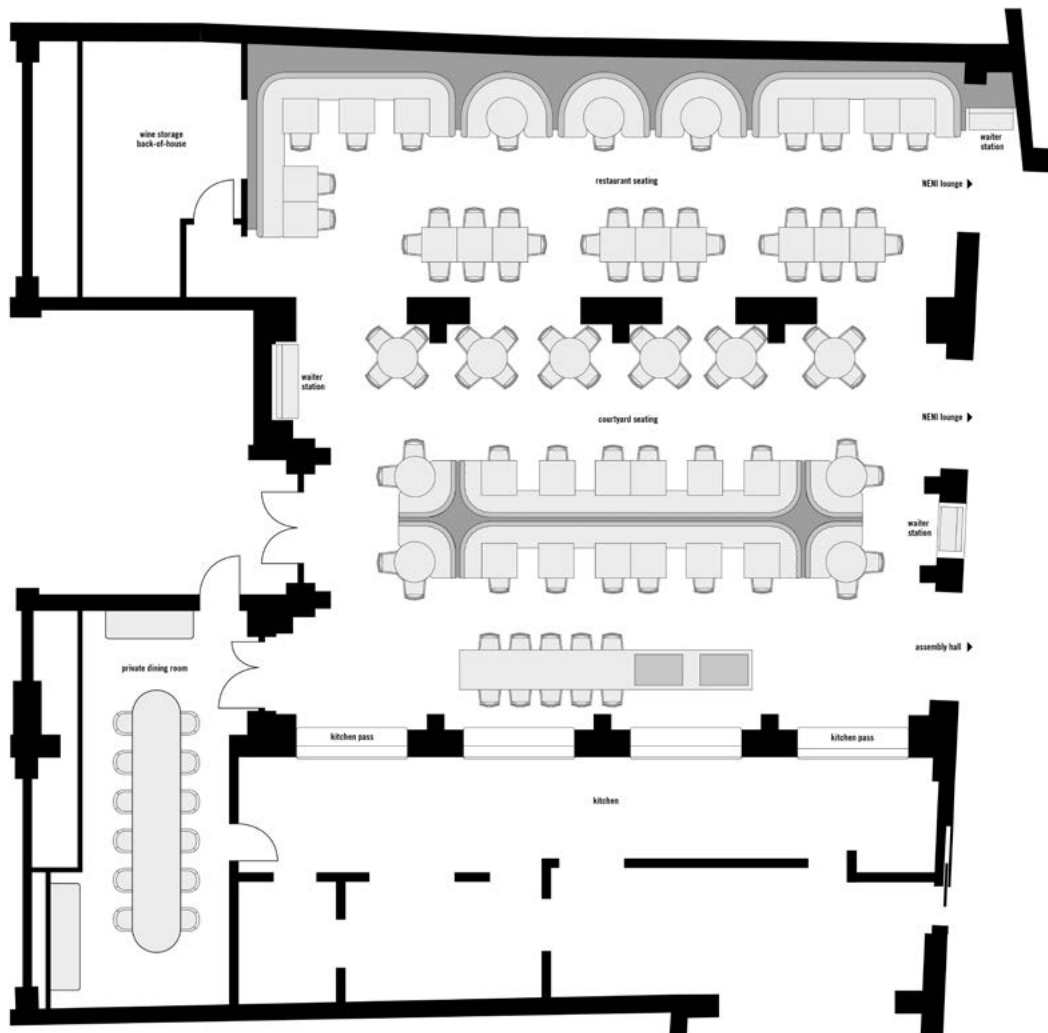
room rental  
(equals minimum spend)      hourly rate 800 DKK  
full day 5000 DKK



# NENI exclusive use



# NENI exclusive use



Do you have an upcoming corporate event or a special birthday that you want to celebrate in style? NENI is the perfect place for a variety of occasions. The glass roof in the middle of the restaurant can be opened to create a fantastic outdoor feel in the summer. The open kitchen and large NENI bar can cater for every requirement.

## sunday-wednesday

- exclusive use of NENI
- up to 120 guests
- including private dining room, NENI lounge & NENI bar
- food and beverage are deducted from minimum spend
- the remaining amount will be charged as location rent
- excluding gratuity

120.000 DKK minimum spend

## thursday-saturday

- exclusive use of NENI
- up to 120 guests
- including private dining, NENI lounge & NENI bar
- food and beverage are deducted from the minimum spend
- the remaining amount will be charged as location rent
- excluding gratuity

minimum spend upon request

In both cases, extra costs such as menu cards, special equipment, and furniture, etc. will NOT be deducted from the minimum spend.

# Café Duse exclusive use



# Café Duse exclusive use

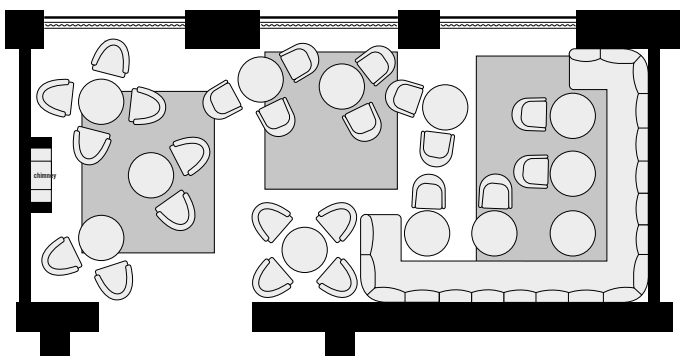


## overview

Café Duse, near Copenhagen's Round Tower, is a cozy and elegant tearoom inspired by the famous Italian actress Eleonora Duse. Known for its beautiful cakes and pastries made by Italian baker Melissa Forti, the café combines Italian flavors with Danish coziness. Guests can enjoy freshly baked treats, light lunches, and afternoon tea with organic teas, Italian coffee, and aperitifs. With its warm and inviting atmosphere, Café Duse is the perfect place to relax and enjoy something special.

## facts

size	room capacity [max. capacity]	equipment	minimum number of attendees
_ 53 m <sup>2</sup>	_ lounge set-up [30 people]	_ incl. water and technic	_ no minimum attendees, just minimum spend



room rental  
(equals minimum spend) 15.000 DKK

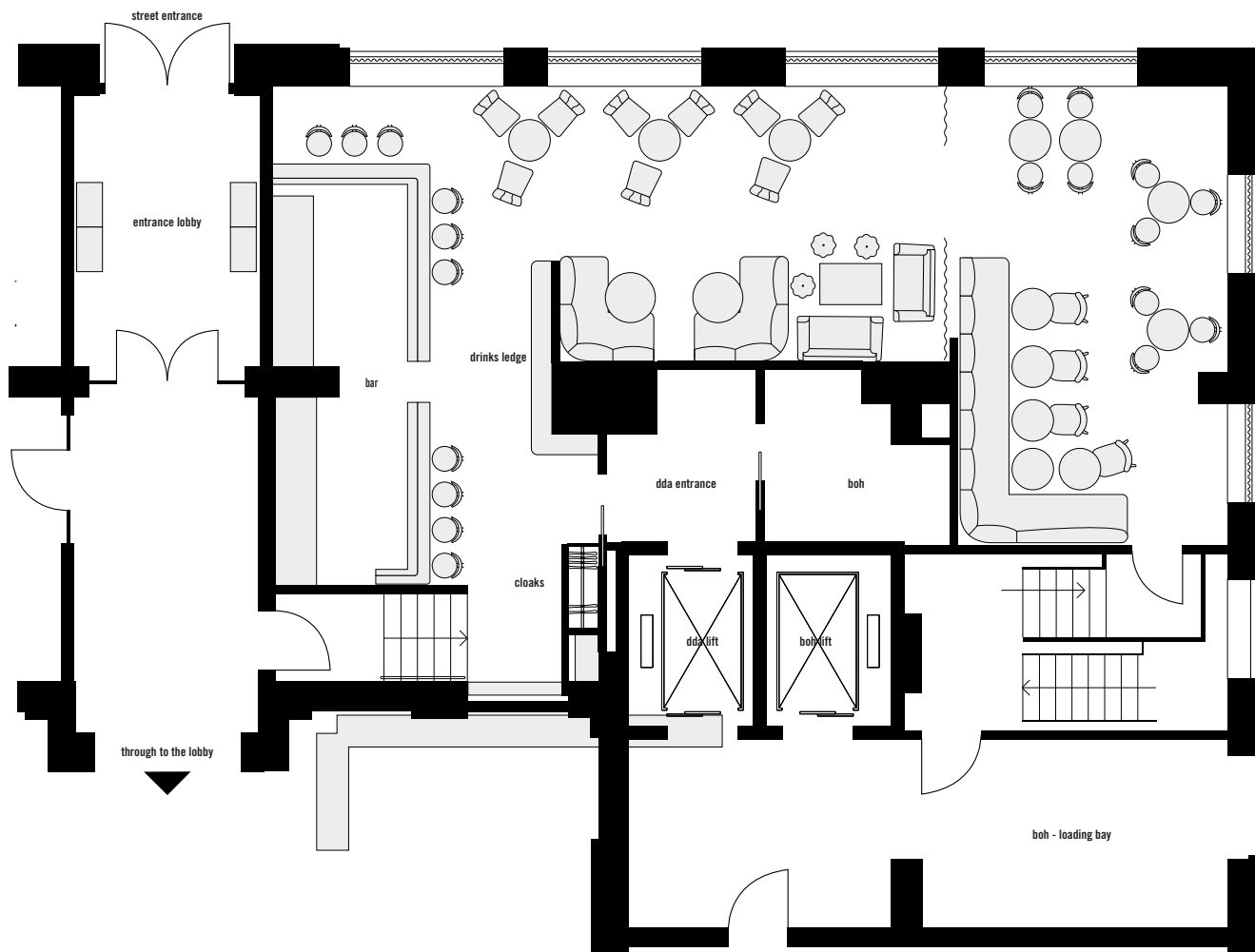


# rendezvous bar exclusive use



# rendezvous bar exclusive use

18



Who does not love a cool, speak-easy style bar? With a separate entrance from the church square, the rendezvous bar is ideal for Friday bars, music releases or relaxed get-togethers. The mixed seating allows for space to dance, chill or stand at the bar.

## all week

- exclusive use of rendezvous bar
- up to 100 guests
- food and beverages are deducted from the minimum spend
- the remaining amount will be charged as location rent
- excluding gratuity

15.000 DKK per hour

extra costs such as menu cards, special equipment, and extra furniture, etc. will NOT be deducted from the minimum spend.

shine on,  
you crazy  
diamond.



**25h**

copenhagen / indre by  
twenty five hours hotel

# hotel rooms

## medium single

- \_ 19 - 25sqm
- \_ single bed (120cm)
- \_ air conditioning
- \_ free high-speed WiFi
- \_ Kreatfunk bluetooth speaker
- \_ FREITAG or canvasco bag
- \_ Schindelhauer Bikes for rent
- \_ free minibar

## medium

- \_ 22 - 26 sqm
- \_ king-size-/queensize- or twin beds
- \_ air conditioning
- \_ free high-speed WiFi
- \_ Kreatfunk bluetooth speaker
- \_ FREITAG or canvasco bag
- \_ Schindelhauer bikes for rent
- \_ free minibar

## medium plus

- \_ 22 - 26 sqm
- \_ king-size-/queensize- or twin beds
- \_ terrace
- \_ air conditioning
- \_ free high-speed WiFi
- \_ Kreatfunk bluetooth speaker
- \_ FREITAG or canvasco bag
- \_ Schindelhauer bikes for rent
- \_ free minibar



# hotel rooms

## large

- \_ 27 - 30 sqm
- \_ king-size- or twin-beds
- \_ air conditioning
- \_ free high-speed WiFi
- \_ bluetooth-loudspeaker
- \_ FREITAG or canvasco bag
- \_ Schindelhauer Bikes fo rent
- \_ free minibar

## extra large

- \_ 39 - 42 sqm
- \_ king-size bed
- \_ air conditioning
- \_ free high-speed WiFi
- \_ desk
- \_ Kreafunk bluetooth speaker
- \_ FREITAG or canvasco bag
- \_ free use of our Schindelhauer Bikes
- \_ free minibar



# hotel rooms

## **gigantic**

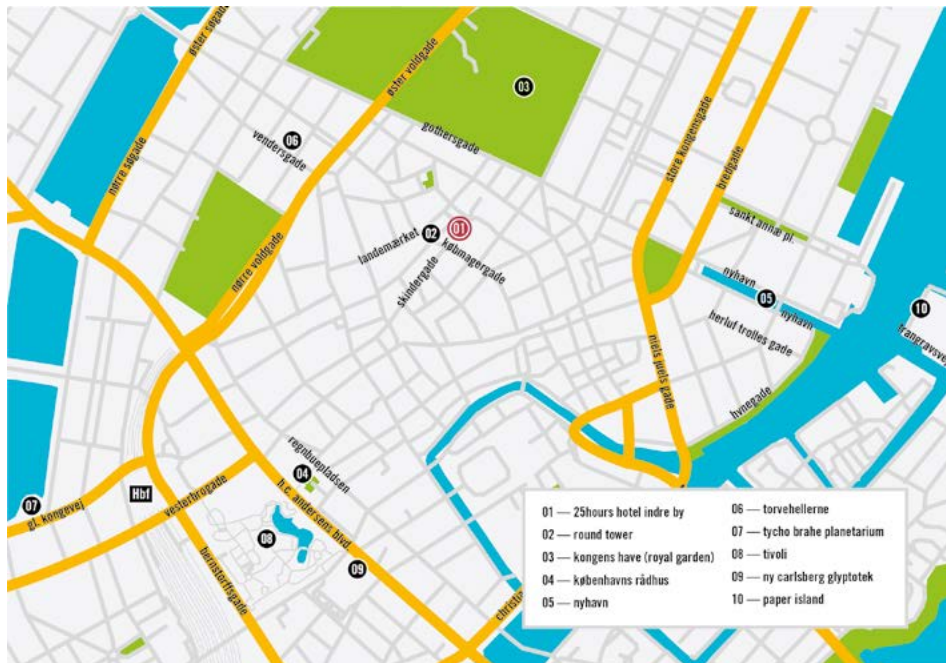
---

- \_ 55-59 sqm
- \_ king-size bed
- \_ air conditioning
- \_ free high-speed WiFi
- \_ desk
- \_ Kreatfunk bluetooth speaker
- \_ FREITAG or canvasco bag
- \_ bath tub
- \_ enough space for up to 3 guests
- \_ free use of our Schindelhauer Bikes
- \_ free minibar



# directions

## indre by



## arriving on public transport

From Copenhagen Kastrup Airport - In the terminal, follow the signs to metro line M2 towards Vanløse St. and get off at Nørreport station. From here it is only a 5 minute walk. Follow Fredriksborggade east until you reach the Round Tower. Turn left just after the tower and the hotel is on your right. Coming from Central Station - At the station, follow the signs to the S-train and take any train stopping at Nørreport. Get off at Nørreport station. From here it is only a 5 minute walk. Follow Fredriksborggade eastwards until you reach the Round Tower. Turn left just after the tower and the hotel is on the right.

## arriving by car

Coming from the airport or from Malmö:

Take Amager Strandvej. Turn left onto Uplandsgade. Take Vermlandsgade towards the city centre. Cross the water at Börsgarde via Havnegade. Turn right onto Homens kanal and then immediately left towards Kongens Nytorv. After Kongens Nytorv, turn left onto Kongens Nytorv (becomes Gothersgade). Turn left at Landemærket, and left again at Pilestræde.

Coming from the south:

Follow the E20 towards Copenhagen. Take exit 20-Copenhagen C. Follow the road Sjællandsbroen / 02. After Kongens Nytorv Square, turn left onto Kongens Nytorv Street (becomes Gothersgade). Keep left and follow the one-way street until Pilestræde. The hotel is located at Pilestræde 65 and does not have hotel parking. Parking on the street in front of the hotel is not possible due to its central location in the city centre. Parkeringshus / Gammel Mønt 1 and Q-Park Nørreport are only a few minutes from the hotel. Please note opening hours.

hygge  
home.



# conference packages

## nomad daily delegate rate

- \_ room rental
- \_ projector and screen or flat screen (depending on the conference room)
- \_ water & soft drinks during the day
- \_ coffee break in the morning with fruits and a selection of savory snacks
- \_ chef's choice lunch served at nomad including salad or soup and a selection of sandwiches, soft drinks
- \_ coffee break in the afternoon with a selection of sweet pastries and cakes from our nomad day bar

---

890 DKK full day p.p.\*  
710 DKK half day p.p.\*

## Tiger Lily daily delegate rate

- \_ room rental
- \_ projector and screen or flat screen (depending on the conference room)
- \_ water & soft drinks in your main meeting room
- \_ coffee break in the morning with a sweet & savory snack chef's choice
- \_ tiger lily 2 course chef's choice lunch, soft drinks
- \_ coffee break in the afternoon with a selection of pastries and a sweet snack from tiger lily chef's choice

---

990 DKK full day p.p.\*  
790 DKK half p.p.\*

## full experience daily delegate rate

- \_ room rental
- \_ projector and screen or flat screen (depending on the conference room)
- \_ water & soft drinks in your main meeting room, as well as yuzu lemonade
- \_ coffee break in the morning with a sweet & savory snack as well as fruits chef's choice
- \_ tiger lily signature sharing menu chef's choice, soft drinks & a barista coffee
- \_ coffee break in the afternoon with a selection of pastries and a sweet snack from tiger lily as well as fruits chef's choice

---

1150 DKK full day p.p.\*  
980 DKK half day p.p.\*

additional conference equipment available on request

\* minimum spend of the room needed

# room rent overview\*

## hack shack

- \_ 170 m<sup>2</sup>
- \_ capacity of 150 people
- \_ set-up theatre style
- \_ incl. water and technic

---

all day 30.000 DKK  
half day 18.000 DKK

## lobster lounge

- \_ 65 m<sup>2</sup>
- \_ capacity of 14 people
- \_ set-up boardroom style
- \_ incl. water and technic

---

all day 8.000 DKK  
half day 5.000 DKK

## survival studio

- \_ 17 m<sup>2</sup>
- \_ capacity of 8 people
- \_ set-up boardroom style
- \_ incl. water and technic

---

all day 7.000 DKK  
per hour 800 DKK

## navigation room

- \_ 20 m<sup>2</sup>
- \_ capacity of 12 people
- \_ set-up boardroom style
- \_ incl. water & technic

---

all day 6.000 DKK  
half day 3.000 DKK

\*without conference package

# extras

upgrade your package (prices only in combination with a booked meeting package)

## good morning darling.

add a barista coffee at our nomad day bar

---

35 DKK p.p.

## cheers.

add an after-work cocktail "bar keeper's choice" at Victory Public House overlooking Copenhagen

---

105 DKK p.p.

## after work drink.

add an after-work drink at our nomad day bar or our terrace

---

85 DKK p.p.

## take a beer.

bring a beer along after your meeting

---

40 DKK p.p.

## equipment

equipment available upon request, pricing per item

white board or flip chart	150 DKK
handheld microphone	250 DKK
headset microphone	350 DKK
additional sound system with 2 speakers	450 DKK
c touch screen	500 DKK
further technical equipment	upon request from external company

green houses are available for use outside

# holistic extras

these ones are also bookable without meeting package

## minibar

americano, sazerac,  
rapscallion 70ml and  
baby guinness 0,25l  
at Victory Public House

---

250 DKK p.p.

## all drinks on deck

pisco sour, bamboo,  
tom collins  
at Victory Public House

---

320 DKK p.p.

## roar like a tiger

tiger lily signature sharing  
menu chef's choice

---

525 DKK p.p.

## private boat tour

including drinks  
for up to 12 guests

---

7000 DKK

## ooooooooo hmm

group yoga

---

200 DKK p.p.

green houses are available for use outside

# survival studio

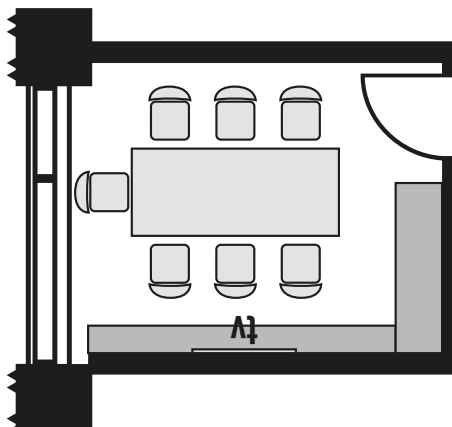


## overview

Step into the Survival Studio, where towering ceilings and a cozy, library-inspired setting create the perfect atmosphere for creativity and relaxation. Surrounded by walls of books and an extensive collection of board games, this space offers a unique blend of intellectual charm and playful energy—ideal for brainstorming sessions, team-building activities, or unwinding after a busy day.

## facts

size	room capacity [max. capacity]	equipment
_ 17 m <sup>2</sup>	_ boardroom style [6 people]	_ tv screen



# lobster lounge

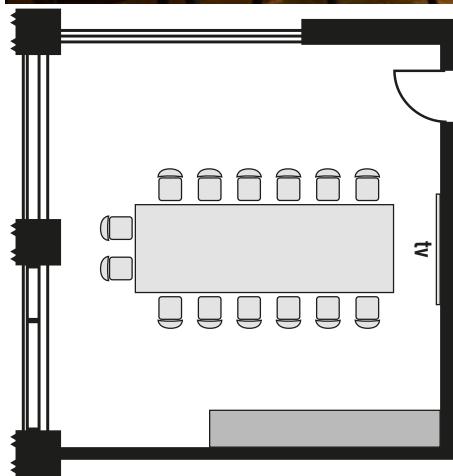


## overview

The Lobster Lounge blends maritime charm with modern comfort. Featuring high ceilings and large windows, this meeting room is flooded with natural light and opens directly to the lobby lounge. Decorated with historic eel fishing gear, Danish sea maps, and authentic nautical equipment like ship ropes and anchors, it offers a unique, seafaring ambiance — perfect for inspiring productive discussions in a distinctive, ocean-inspired setting.

## facts

size	room capacity [max. capacity]	equipment	minimum number of attendees
_ 65 m <sup>2</sup>	_ boardroom style [14 people]	_ tv screen _ sound system	_ 5 people



# hack shack

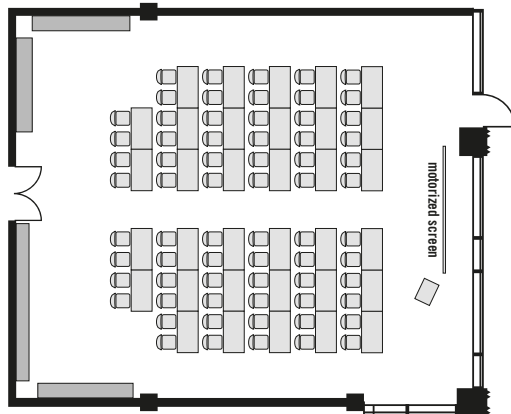


## overview

The Hack Shack offers a creative, hands-on atmosphere inspired by an old woodworking shop. Adorned with vintage woodwork tools, this space brings craftsmanship and innovation together. With a flexible layout and dedicated workshop areas, it's ideal for team projects, brainstorming sessions, or interactive workshops — perfect for those looking to build ideas in a unique, workshop-style setting.

## facts

size	room capacity [max. capacity]	equipment	minimum number of attendees
— 170 m <sup>2</sup>	— theatre style [150 people] — classroom style [70 people] — u-shape [40 people]	— projector & screen — additional tv screen & sound system	— 20 people



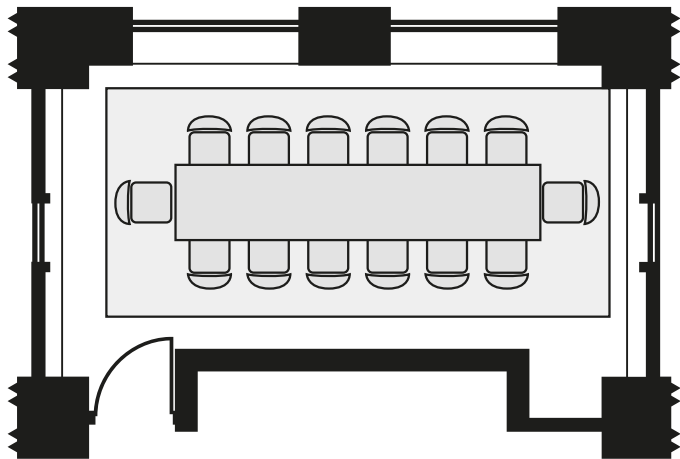
# navigation room

## overview

Located within the Victory Public House, the Navigation Room offers stunning views in three directions from its top-floor setting. Though part of the vibrant Victory bar, this private room stands out with its intimate atmosphere and an ideal space for private gatherings, offering both privacy and breathtaking panoramas.

## facts

size	room capacity [max. capacity]	equipment	minimum number of attendees
_ 20 m <sup>2</sup>	_ boardroom style [12 people]	_ tv screen	_ 3 people





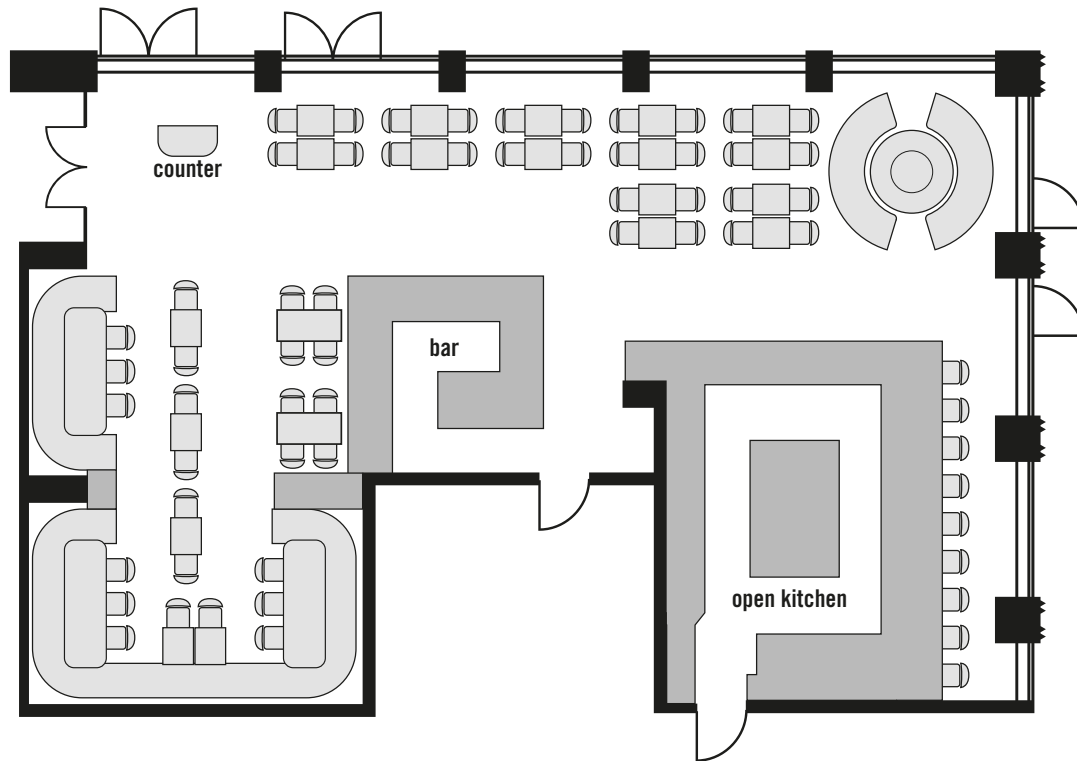
# Tiger Lily

exclusive use



# Tiger Lily

exclusive use



Tiger Lily where vibrant flavors meet captivating décor. Adorned with origami birds and Asian-style accents, the ambiance is as inviting as it is elegant. The open show kitchen lets you witness the art of cooking up close, adding a dynamic element to your dining experience. Perfect for those seeking a blend of culinary artistry and cultural charm. With fully openable windows to the outside.

## sunday- wednesday

- exclusive use of Tiger Lily
- up to 90 guests
- food and beverage are deducted from minimum spend
- the remaining amount will be charged as location rent
- excluding gratuity

70.000 DKK minimum spend

## thursday- saturday

- exclusive use of Tiger Lily
- up to 95 guests
- including private dining
- food and beverage are deducted from the minimum spend
- the remaining amount will be charged as location rent
- excluding gratuity

90.000 DKK minimum spend

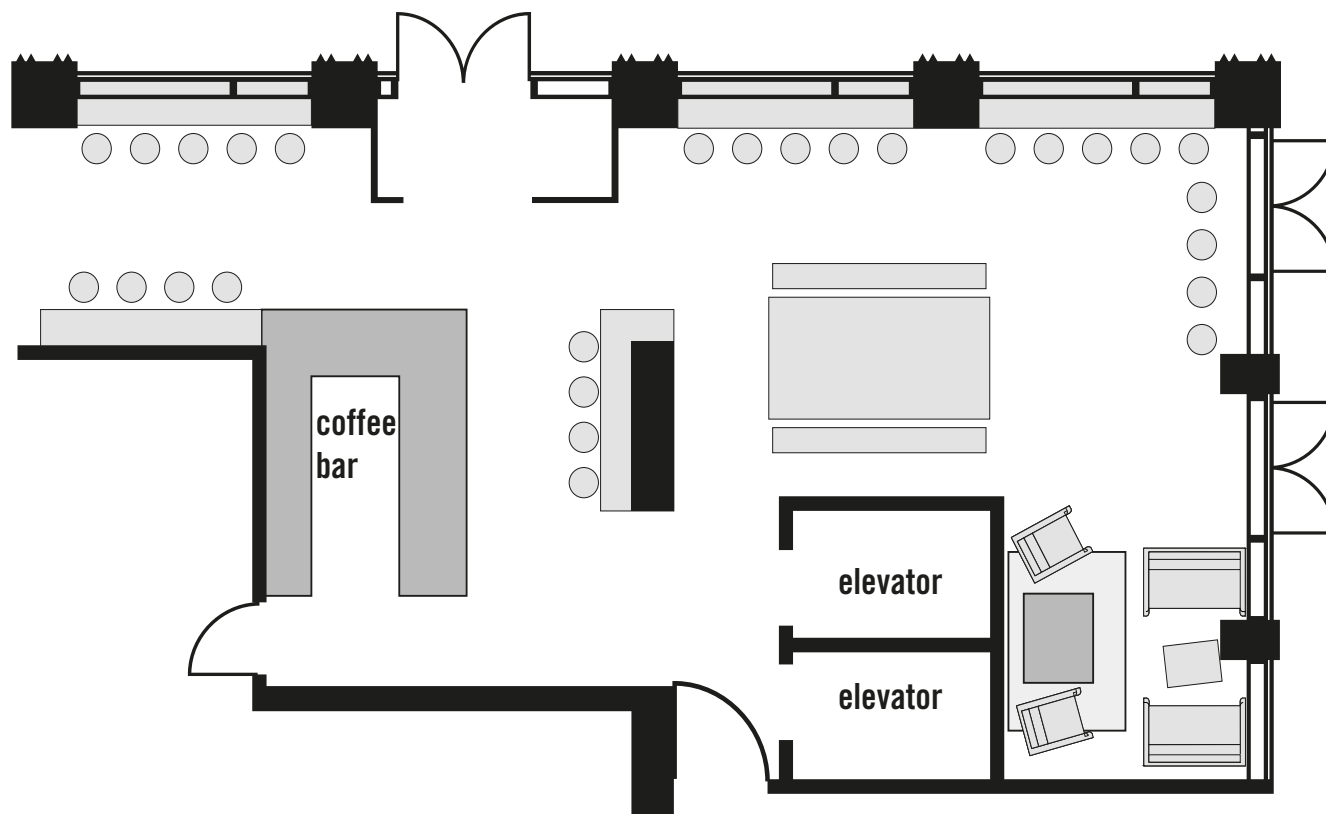
In both cases, extra costs such as menu cards, special equipment, and furniture, etc. will NOT be deducted from the minimum spend.

# Nomad Day Bar exclusive use



# Nomad Day Bar exclusive use

36



Let's spill the beans: the perfect spot for a quick caffeine boost! Nomad Day Bar is an all-day café featuring sleek Scandinavian design and a stunning mural of a Danish landscape. With fully openable windows to the outside, it offers a refreshing indoor-outdoor vibe, making it the ideal place to recharge and enjoy a laid-back atmosphere throughout the day.

## all week

- exclusive use of Tiger Lily
- food and beverage are deducted from minimum spend
- the remaining amount will be charged as location rent
- excluding gratuity

12.000 DKK minimum spend

extra costs such as menu cards, special equipment, and extra furniture, etc. will NOT be deducted from the minimum spend.

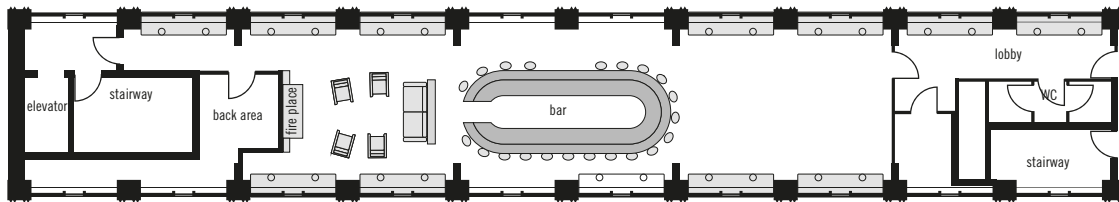
# Victory Public House

exclusive use



# Victory Public House

## exclusive use



Victory Public House on the 8th floor invites to enjoy exceptional cocktails or a refreshing Guinness while taking in stunning views of Copenhagen.

The bar is influenced by the maritime feel and the famous British navy ship, Victory. It blends the cozy vibe of an East London pub with top-notch cocktails for a unique experience.

**sunday-  
wednesday**

20.000 DKK minimum spend

**thursday-  
saturday**

upon request

In both cases, extra costs such as menu cards, special equipment, and furniture, etc. will NOT be deducted from the minimum spend.

swim, you're  
in the ocean.



25h

copenhagen / indre by  
twenty five hours hotel

# hotel rooms

## medium

- \_ 16 - 19sqm
- \_ cottage or boat style
- \_ king-size or queen-size bed
- \_ air conditioning
- \_ free high-speed WiFi
- \_ Kreatfunk bluetooth speaker
- \_ FREITAG bag
- \_ Schindelhauer Bikes for rent
- \_ free minibar

## large

- \_ 17 - 29 sqm
- \_ cottage or boat style
- \_ king-size- or twin beds
- \_ air conditioning
- \_ free high-speed WiFi
- \_ Kreatfunk bluetooth speaker
- \_ FREITAG bag
- \_ Schindelhauer bikes for rent
- \_ free minibar

## large plus

- \_ 22 sqm
- \_ boat style
- \_ direct garden access
- \_ king-size-bed
- \_ air conditioning
- \_ free high-speed WiFi
- \_ Kreatfunk bluetooth speaker
- \_ FREITAG bag
- \_ Schindelhauer Bikes for rent
- \_ free minibar





# hotel rooms

## extra large

- \_ 30-40 sqm
- \_ king-size bed
- \_ air conditioning
- \_ free high-speed WiFi
- \_ desk
- \_ Kreafunk bluetooth speaker
- \_ FREITAG bag
- \_ free use of our Schindelhauer Bikes
- \_ free minibar
- \_ filter coffee & tea selection

## gigantic

- \_ 38-41 sqm
- \_ king-size- or twin beds
- \_ air conditioning
- \_ free high-speed WiFi
- \_ desk
- \_ Kreafunk bluetooth speaker
- \_ FREITAG or canvasco bag
- \_ enough space for up to 3 guests
- \_ free use of our Schindelhauer Bikes
- \_ free minibar
- \_ filter coffee & tea selection



# event ideas

## pop-up

The patterns have been returned to the drawers, the sewing machine is now gathering dust. And the most important thing: The first collection is ready to wear. Before you take it to Milan, Paris, or London, how about your own pop-up at one of our 25hours Hotels? Even the biggest designers started small and unconventionally and presented their pieces to the public. Or is there a new product launch in the pipeline? Thanks to our locations in the major city in Denmark, the potential customer base is already present and won't miss your pop-up.



## press conference

Your press appearance really needs to make waves? To do this, not only the product has to be right, but also the venue. At our 25hours Hotels in Germany, Austria, and Switzerland, we offer personalised solutions for the perfect setting. Classic conference rooms with seating, cosy lounges with a fireplace or a panoramic view over the city - whatever suits your product or target groups best, we'll work together to host the perfect press conference.



## product launch

From lip balm, to the new novel series, right up to sports cars packed with horse power - good ideas need effective launches in order to have a successful start on the market. The 25hours locations are as diverse as the products unique. Be it big and grandiose or cosy and small - do you already have a brilliant idea and your breakthrough is within reach? Maybe you still need a little inspiration.



## assessment centre

Let's get down to business. Which of the applicants is potentially the right candidate for a management role? Individual or group assessments, management audits, or an evaluation assessment centre - when discretion has the top priority, we're the right choice. Even just for a cosy get-together at one of our restaurants or bars - there is a personalised solution for all kinds of requests. And the possibilities are endless at the 25hours Hotels.



# event ideas

## album release

The new album: Check! The big day is here. Now, the big wide world should listen and recognise the true artistry. We have exactly the right locations for this - be it cosy and intimate or big and fabulous. For twenty, a hundred, or even hundreds of listeners. With a live set or a sound system with bass tubes and the perfect sound. We even have instruments available on site at some hotels. Just do your thing and win the audience over with your new album. We have everything you need and the perfect spaces for a flawless release party.



## casting

Your company is in its infancy and your new offices aren't ready yet? We would be happy to provide our rooms for castings and recruitment interviews. Whether it's on a small scale or somewhat larger. Be it individual hotel rooms, the lobbies, bars, or restaurants - we have the right venue for any casting event. Just click through to have a look or come and visit us in person. Many rooms can be adjusted as required to meet your exact needs.



## photoshooting

The new lookbook for the coming season needs to be shot? The next edition of the magazine has a feature on Berlin? Zurich or Hamburg? The photographer is booked, but the matter of the right location hasn't been resolved? Our 25hours Hotels, with their individual hotel concepts, offer tailored spaces for photoshoots with a passion for detail. Whether it's in a bathtub with a view over the Vienna MuseumsQuartier, on the roof terrace at the 25hours Hotel Bikini Berlin with a view of chimpanzees and elephants, or in the colourful, urban world of the 25hours Hotel Frankfurt The Goldman in Frankfurt's east end. Our hotels are as diverse as the fashion and culture themselves.



# directions

## paper island

### arriving on public transport

Bus 2A connects to Christianshavn metro station, providing access to Line M2 for easy travel to the airport and city center.

Alternatively, guests can take a scenic walk from Kongens Nytorv in the city center, about 1 km away, passing the iconic Nyhavn along the way.

### arriving by car & parking

From Knippelsbro, you'll drive along Torvegade and turn onto Prinsessegade, passing the charming area of Christianshavn with its canals and historic buildings. Following the road towards Papirøen, you'll reach the hotel near the waterfront.

25hours Hotel Paper Island has 11 parking spots in the basement. First come, first serve. Hotel guests can purchase discounted 24-hour tickets at the reception for DKK 350.

Tiger Lily, Nomad Day Bar and Victory Public House guests please use the parking apps in the parking garage (hourly rate DKK 35).

# contact

25hours Hotel Indre By  
Pilestræde 65  
DK-1112 Copenhagen K.

p +45 887 724 05  
[events.indreby@25hours-hotels.com](mailto:events.indreby@25hours-hotels.com)  
[events.paperisland@25hours-hotels.com](mailto:events.paperisland@25hours-hotels.com)