

freiraum



25h

cologne/the circle
twenty five hours hotel

inhalt

- 3 overview**
- 4 packages**
- 5 extras**
- 6 freiraum function rooms**
- 13 rooms**
- 15 event ideas**
- 17 directions**
- 18 contact**

the rings of fire.

overview

- 207 rooms
- ue boom bluetooth speakers in every room
- free high-speed Wi-Fi throughout the hotel
- sauna
- function rooms
- 25h things shop

public areas

- 25h things shop
- record store
- bike corner
- NENI restaurant
- monkey bar
- function rooms



conference packages

basic package

always included

- _ pad & pencil
- _ projector and screen or flat screen (depending on the conference room)
- _ 1 whiteboard/pin board
- _ 1 flipchart with paper and pens
- _ 1 moderator's toolkit
- _ free high-speed Wi-Fi
- _ personal support during the conference

other conferencing equipment as needed

half-day package

from 9 - 14h or 14 - 19h

- _ basic package
- _ free provision for a minimum of participants*
- _ unlimited beverages in the conference room
- _ coffee specialties and teas
- _ business lunch of the chef's choice at NENI including soft drinks
- _ snack break in the morning or afternoon with sweet/savory snacks

eur 83 per person per day

full-day package

- _ basic package
- _ free provision for a minimum of participants*
- _ unlimited beverages in the conference room
- _ coffee specialties and teas
- _ business lunch of the chef's choice at NENI including soft drinks
- _ snack break in the morning or afternoon with sweet/savory snacks

eur 93 per person per day

*room rental depending on conference room and number of participants

conference plus

yummy snack-upgrade

in addition to standard snacks (may vary)

- _ savory snack break:
 - _ NENI hummus with veggie sticks
 - _ bircher muesli
- _ sweet snack break:
 - _ homemade bananabread
 - _ macarons
 - _ fruit salad

eur 7 per person/h

afterwork companion-drink

(duration 30min)

- _ toast together in the conference foyer
- _ COMPANION aperitivo selection
- _ amalfi spritz
- _ sicilian spritz
- _ designated driver

eur 15 per person

call it a day get-together

(from 30 persons - 18h till max. 22h)

- _ get-together at the co-working café
- _ water & soft drinks
- _ mühlen kölsch beer
- _ white & red wine
- _ COMPANION aperitivo selection
- _ 3 fingerfood items from NENI

eur 38 per person/h

extras

equipment

equipment available on request, pricing per item

moderator's toolkit	eur 50	clip-on microphone, inkl. large sound system (required)	on request
flipchart	eur 30 [one flipchart is included in the package]	handheld microphone	on request
pin board	eur 25 [one pin board is included in the package]	dj booth with two turntables and 2 CD players, 1 mixer and 2 active loudspeakers	on request
mobiler screen	eur 150	dj	on request

stereo

equipment available on request and availability

stereo 1

- _ 3x shure microphone sm 58 + stand
- _ 2x sennheiser radio microfon + radio link
- _ 1x allen & heath 16 channel mixer zed 16 fx
- _ lexicon mx 300 stereo effects processor
- _ 1x dbx compressor/limiter 166 xs
- _ 3x palmer di box passive
- _ 1x multicore 16 times
- _ 2x qse monitor k series
- _ 2x bose pa l1 modell 1s system
- _ 2x bose b2 bass module

stereo 2

- _ 2x bose f1 flexible array speaker system black
- _ 1x pioneer djm- 750 dj-sound mixer
- _ 2x pioneer cdj 350 k single cd-player
- _ 2x pioneer plx 1000 turntable
- _ 2x ortofon concorde mix mkii system
- _ 5x m1k1fm1000 prime microfon
- _ cabel with xlr 10 meter
- _ 5x pt1-gu superior titanex h07rn-f power cabel
- _ 3g1,5, rubber 10 meter
- _ 1x sennheiser e 835 s vocal microfon,
dynamic, kidney, e/a-schalter, 3-polig, xlr-m,
anthracite, including bracket and bag
- _ 2x eon610 active screenspeaker

the rings
of fire.



25h

cologne/the circle
twenty five hours hotel

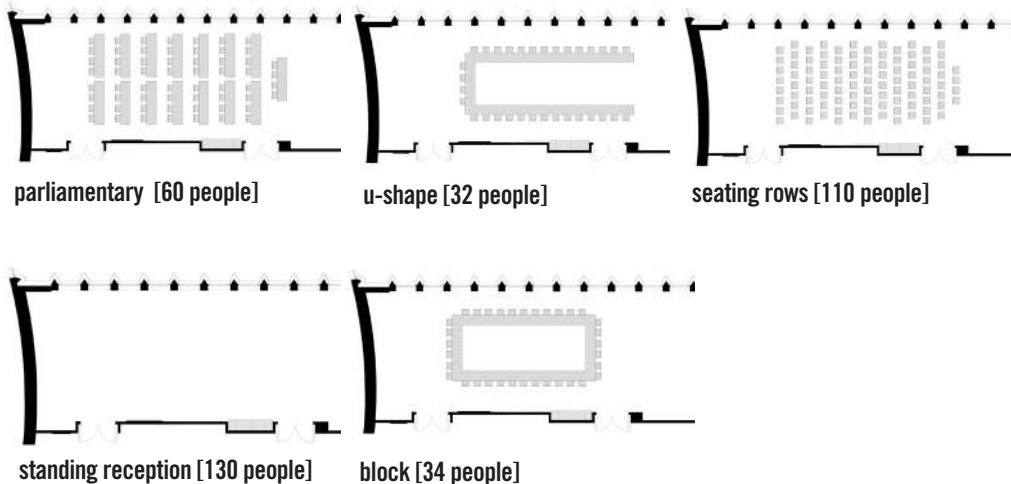
space unit 1 & 2



overview

At 124 sqm, the Space Unit is the largest function room in the rotunda. Large windows provide fresh air and views of the rear courtyard whilst small windows looking out onto the conference foyer are more suited to daydreaming. Different seating arrangements offer lots of flexibility and the option to plan anything from a reception for up to 130 people to traditional conferences, creative workshops and even more unusual events. For smaller events, the generous space can be divided into two units of 44 sqm and 80 sqm.

facts



size	room capacity [max. capacity]	equipment	minimum number of attendees
<ul style="list-style-type: none"> _ 124qm _ 19,3 x 6,7 x 2,95m (l x b x h) 	<ul style="list-style-type: none"> _ parliamentary [60 people] _ u-shape [32 people] _ seating rows [110 people] _ standing reception [130 people] _ block [34 people] 	<ul style="list-style-type: none"> _ daylight _ basic package 	<ul style="list-style-type: none"> _ 32 people

room rental from eur 1.100 for a half day
from eur 1.800 for a full day

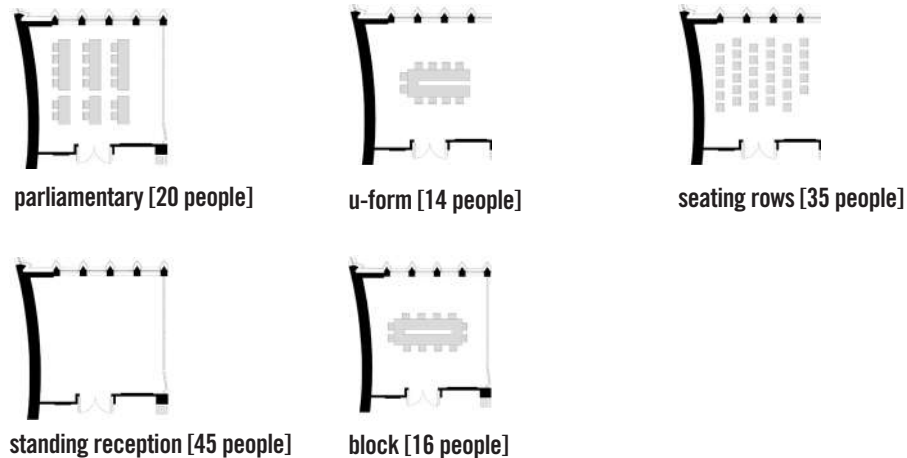
space unit 1



overview

With 44 sqm of floor space, Space Unit 1 is perfectly suited to both a reception for up to 45 people and smaller meetings with 10 participants. The large windows flood the meeting room with natural light and offer the perfect atmosphere for a lively exchange and fresh.

facts



size	room capacity [max. capacity]	equipment	minimum number of attendees
<ul style="list-style-type: none">– 44qm– 7,5 x 6,7 x 2,95m (l x b x h)	<ul style="list-style-type: none">– parliamentary [20 people]– u-shape [14 people]– seating rows [35 people]– standing reception [45 people]– block [16 people]	<ul style="list-style-type: none">– daylight– basic package	<ul style="list-style-type: none">– 12 people
room rental	from eur 750 for a half day from eur 900 for a full day		

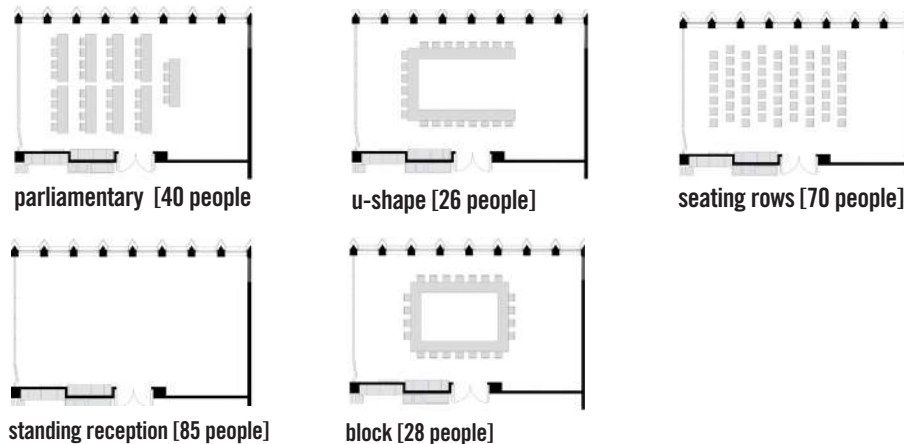
space unit 2



overview

Whether it's a reception, creative workshop or private event – Space Unit 2 is highly versatile. The large windows provide a lot of natural light and fresh air. The gaming machine in the conference foyer is a great opportunity to take a break and come back brimming with new energy and ideas.

facts



size	room capacity [max. capacity]	equipment	minimum number of attendees
<ul style="list-style-type: none">– 80qm– 11,8 x 6,7 x 2,95m (l x b x h)	<ul style="list-style-type: none">– parliamentary [40 people]– u-shape [26 people]– seating rows [70 people]– standing reception [85 people]– block [28 people]	<ul style="list-style-type: none">– daylight– basic package	<ul style="list-style-type: none">– 30 people
room rental	from eur 850 for a half day from eur 1.100 for a full day		

satellite 1+2

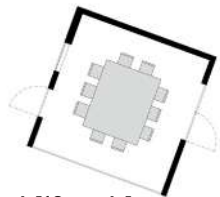


overview

At 23 sqm each, the two seminar rooms in the conference foyer each have space for up to 10 people. The colourfully mirrored Satellites 1 and 2 are ideally suited to workshops, more intimate meetings or as breakout rooms. Equipped with boardroom seating and modern conference technology, the rooms are decorated in warm shades of brown and red. The glass fronts offer wonderful views of the outdoors.

facts

size	room capacity [max. capacity]	equipment	minimum number of attendees
— 23qm — 4,8 x 4,8x 2,5m (l x b x h)	— block [10 people]	— daylight — basic package	— 8 people



block [10 people]

room rental

from eur 350 for a half day
from eur 650 for a full day

entire conference space ¹²



overview

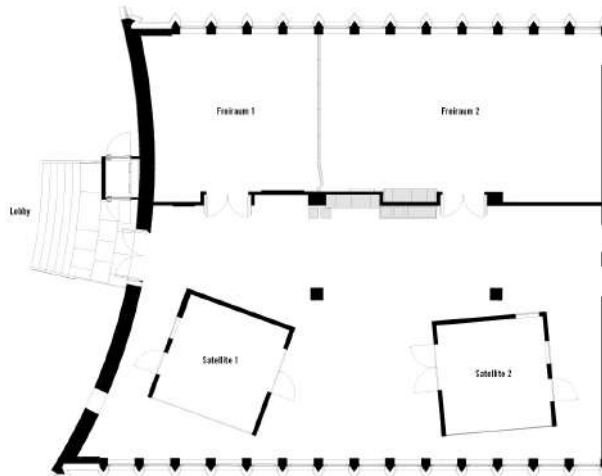
The entire venue, including the Space Units, Satellites and conference foyer, has a total floor space of 240 sqm. The rooms can hold up to 120 people and offer both flexibility and exclusivity. With its seating areas and adjustable lounge corners, the foyer is both cosy and open, and features as its highlight a gaming machine with 1,000 games, including classics like Pac-Man, and can be played in two-player mode.

facts

size	room capacity [max. capacity]	equipment	minimum number of attendees
— 240qm	— available for group work, interviews, photoshoots, creative sessions etc. [120 personen]	— daylight — basic package	— 50 people

room rental

on request



entire conference space

rooms

medium inner circle

- _ 21-23qm
- _ queen.size bed (160cm)
- _ free high-speed wi-fi
- _ air conditioning
- _ bluetooth speakers
- _ rain shower head
- _ smart-tv
- _ freitag- or canvasco-bag for use during your stay



medium outer circle

- _ 20-25qm
- _ queen-size bed (160cm) or twin beds (2x90cm)
- _ free high-speed wi-fi
- _ air conditioning
- _ bluetooth speakers
- _ rain shower head
- _ smart-tv
- _ desk
- _ freitag- or canvasco-bag for use during your stay



large

- _ from 26qm
- _ king-size bed (180cm) or twin beds (2x90cm)
- _ free high-speed wi-fi
- _ air conditioning
- _ bluetooth speaker
- _ rain shower head
- _ smart-tv
- _ freitag- or canvasco-baf for use during your stay



rooms

extra large

- _ 38-43qm
- _ king-size bed (180cm)
- _ filter coffee & tea varieties
- _ samova-tea maker
- _ most have a sitting area
- _ most have a free-standing bathtub
- _ free high-speed wi-fi
- _ air conditioning
- _ bluetooth speaker
- _ rain shower head
- _ smart-tv
- _ freitag- or canvasco-bag for use during your stay

gigantic

- _ 53qm
- _ king-size bed (180cm)
- _ filter coffee & tea varieties
- _ samova-tea maker
- _ most have a sitting area
- _ most have a free-standing bathtub
- _ free high-speed wi-fi
- _ air conditioning
- _ bluetooth speaker
- _ rain shower head
- _ smart-tv
- _ freitag- or canvasco-bag for use during your stay



event ideas

pop-up

The patterns have been returned to the drawers, the sewing machine is now gathering dust. And the most important thing: The first collection is ready to wear. Before you take it to Milan, Paris, or London, how about your own pop-up at one of our 25hours Hotels? Even the biggest designers started small and unconventionally and presented their pieces to the public. Or is there a new product launch in the pipeline? Thanks to our locations in the major cities in Germany, Austria, and Switzerland, the potential customer base is already present and won't miss your pop-up.



product launch

From lip balm, to the new novel series, right up to sports cars packed with horse power - good ideas need effective launches in order to have a successful start on the market. The 25hours locations are as diverse as the products unique. Be it big and grandiose or cosy and small - do you already have a brilliant idea and your breakthrough is within reach? Maybe you still need a little inspiration.



press conference

Your press appearance really needs to make waves? To do this, not only the product has to be right, but also the venue. At our 25hours Hotels in Germany, Austria, and Switzerland, we offer personalised solutions for the perfect setting. Classic conference rooms with seating, cosy lounges with a fireplace or a panoramic view over the city - whatever suits your product or target groups best, we'll work together to host the perfect press conference.



assessment centre

Let's get down to business. Which of the applicants is potentially the right candidate for a management role? Individual or group assessments, management audits, or an evaluation assessment centre - when discretion has the top priority, we're the right choice. Even just for a cosy get-together at one of our restaurants or bars - there is a personalised solution for all kinds of requests. And the possibilities are endless at the 25hours Hotels.



event ideas

album release

The new album: Check! The big day is here. Now, the big wide world should listen and recognise the true artistry. We have exactly the right locations for this - be it cosy and intimate or big and fabulous. For twenty, a hundred, or even hundreds of listeners. With a live set or a sound system with bass tubes and the perfect sound. We even have instruments available on site at some hotels. Just do your thing and win the audience over with your new album. We have everything you need and the perfect spaces for a flawless release party.



casting

Your company is in its infancy and your new offices aren't ready yet? We would be happy to provide our rooms for castings and recruitment interviews. Whether it's on a small scale or somewhat larger. Be it individual hotel rooms, the lobbies, bars, or restaurants - we have the right venue for any casting event. Just click through to have a look or come and visit us in person. Many rooms can be adjusted as required to meet your exact needs.



photoshooting

The new lookbook for the coming season needs to be shot? The next edition of the magazine has a feature on Berlin? Zurich or Hamburg? The photographer is booked, but the matter of the right location hasn't been resolved? Our 25hours Hotels, with their individual hotel concepts, offer tailored spaces for photoshoots with a passion for detail. Whether it's in a bathtub with a view over the Vienna MuseumsQuartier, on the roof terrace at the 25hours Hotel Bikini Berlin with a view of chimpanzees and elephants, or in the colourful, urban world of the 25hours Hotel Frankfurt The Goldman in Frankfurt's east end. Our hotels are as diverse as the fashion and culture themselves.



directions



arriving on public transport

From the airport — follow the signs towards the S-Bahn (commuter railway) station and take the S13 in the direction of Düren Bahnhof. Get off at Hansaring after about 15 minutes. Change here to take tram number 15 in the direction of Ubiering and after one stop get off at Friesenplatz. At the S-Bahn station Friesenplatz take the escalator up to Friesenstrasse and walk straight ahead up the Hohenzollernring. Turn right at the next crossroads into the road “Im Klapperhof.” After 200 metres you’ll see the 25hours Hotel on the left-hand side. Ticket: EUR 3,00.

From the main train station — Take the U5 from Cologne Central Station heading towards “Sparkasse Am Butzweilerhof” and get off at Friesenplatz. From the station go straight ahead up the Hohenzollernring to the junction – then turn right onto the street “Im Klapperhof” and after 200 metres you’ve reached your destination. Ticket (short distance): EUR 2,00.

arriving by car

Leave the A3 at the Leverkusen junction and take the A1 towards Koblenz/Aachen. After 10 kilometres, at the Köln-Nord motorway junction, follow signs for Cologne centre (Köln Zentrum) towards the A57. Continue following the signs for the A57/K-Zentrum. After 5.5 km take the exit for Cologne. Then turn left onto Subbelrather Strasse and follow it for 1 km. Turn right onto the B9/ Kaiser-Wilhelm-Ring. After 400 metres turn left onto the road “Im Klapperhof.” The hotel is on the lefthand side (No. 22–24).

Parking — enter the underground car park via the underground car park entrance on Spiesergasse. There is a lift to the hotel from the underground car park. The hotel has only a limited number of parking spaces available. EUR 21 per day, open 24 hours.

contact

25hours hotel the circle
im klapperhof 22-24
50670 köln

p +49 221 16 253 261
events.thecircle@25hours-hotels.com